



## **Rabbit anti MBP (Paired T98) Polyclonal Antibody**

**Alternative Name(s):** Myelin basic protein

### **Order Information**

- **Description:** MBP (Paired T98)
- **Catalogue:** 601-880
- **Lot:** See label
- **Size:** 100ug/200ul
- **Host:** Rabbit
- **Clone:** nan
- **Application:** IHC(P), WB
- **Reactivity:** Hu, Ms, Rt

### **ANTIGEN PREPARATION**

A synthetic peptide surrounding the epitope RHRD-T-GILDS without phosphorylation of human MBP protein. This sequence is identical to human, mice and rat.

### **BACKGROUND**

Myelin basic protein (MBP) is the major extrinsic membrane protein of central nervous system myelin. MBP phosphorylation is a complex regulatory process that modulates the contribution of MBP to the stability of the myelin sheath. Mitogen-activated protein kinases modulate MBP phosphorylation during myelinogenesis and in the demyelinating disease multiple sclerosis. MBP phosphorylation is regulated by high-frequency stimulation but not low-frequency stimulation of the alveus, the myelinated output fibers of the hippocampus. It is proposed that during periods of increased neuronal activity, calcium activates axonal nitric oxide synthase, which generates the intercellular messenger nitric oxide and superoxide and regulates the phosphorylation state of MBP by MAPK.

### **PURIFICATION**

The Rabbit IgG is purified by Epitope Affinity Purification

### **FORMULATION**

This affinity purified antibody is supplied in sterile Phosphatebuffered saline (pH7.2) containing antibody stabilizer

### **SPECIFICITY**

This antibody recognizes human MBP (Paired T98) protein with no phosphorylation site Thr98. The other species are not tested.

### **STORAGE**

The antibodies are stable for 24 months from date of receipt when stored at -20°C to -70°C. The antibodies can be stored at 2°C-8°C for three months without detectable loss of activity. Avoid repeated freezing-thawing cycles.

### **APPLICATIONS/SUGGESTED WORKING DILUTIONS\***

- Western Blot: 0.1-1 µg/ml
- ELISA: 0.01-0.1 µg/ml
- Immunoprecipitation: 2-5 µg/ml
- IHC: 2-10 µg/ml
- Flow cytometry: Not tested
- Molecular Weight: 42.5
- Positive Control: Kidney Tissue
- Cellular Location: Cell Membrane

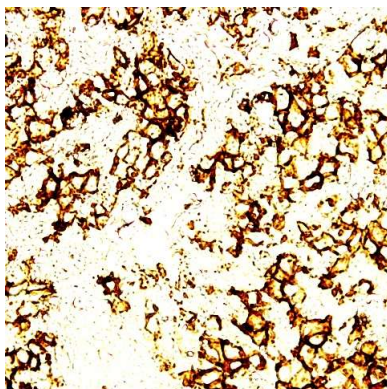
\*Optimal dilutions should be determined by researchers for the specific applications.

### **FOR RESEARCH USE ONLY.**

AbboMax, Inc 2528 Qume Drive, Suite 8, San Jose, California 95131, USA  
1 408-573-1898 (Tel). 1 408-573-1858 (Fax). [www.abbomax.com](http://www.abbomax.com) [info@abbomax.com](mailto:info@abbomax.com)



## DATA ATTACHMENTS



Immunohistochemistry: Human lymphoma (FFPE) stained with Rabbit anti-MBP(paired T98) antibody (Cat# 601-880) at 1:200 for 10 min @ RT. Staining of formalin-fixed tissue requires boiling tissue sections in 10 mM Citrate Buffer, pH 6.0 for 10 min followed by cooling at RT for 20 min.

## REFERENCES

**Martinsen V and Kursula P.** Multiple sclerosis and myelin basic protein: insights into protein disorder and disease. Amino Acids 54 (1), 99-109 (2022)

## FOR RESEARCH USE ONLY.

AbboMax, Inc 2528 Qume Drive, Suite 8, San Jose, California 95131, USA  
1 408-573-1898 (Tel). 1 408-573-1858 (Fax). [www.abbomax.com](http://www.abbomax.com) [info@abbomax.com](mailto:info@abbomax.com)